

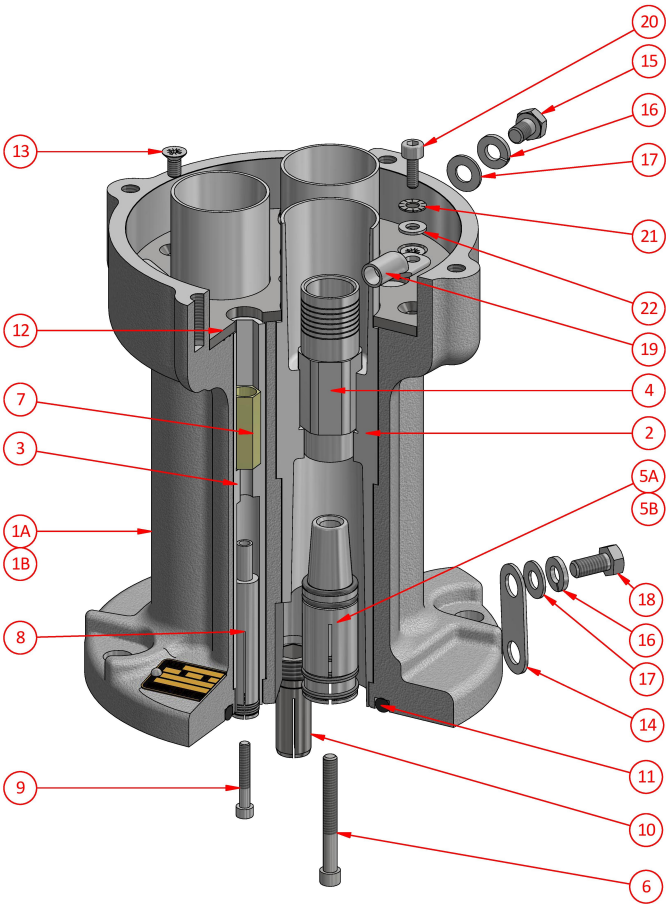


Bolted Coupler

A374A - A474A

300/425 Amp Series C (Aluminium)

Body Size C - 6600V



Weight
Dimensions
Compliance
Materials
IP Rating

8.0kg
L 200mm W 210mm H 280mm
Non Hazardous Area Only. Dimensions to AS/NZS1300
Aluminium / PTFE
IP66

Ordering Procedure

- 1

Select complete Coupler from Table 1
- 2

Select Phase Thimble from Table 2 (3 Required)
- 3

Select Gland from N Series Glands (Aluminium)
- 4

Select Accessories from Aluminium Body Size C Accessories

Table 1

Part Number	Description	Colour
A374A	300A 6600V Bolted Coupler	Silver
A474A	425A 6600V Bolted Coupler	Silver

NB: Coupler supplied with Pilot Thimble

Table 2

Phase Thimble - c/w screw AH009868 1/4" x 2 1/4" skt. head			
Part Number	CSA	ID mm	Utilux Die No.
F-201-432	25	8.0	38-92 Cu
F-201-302	35	9.5	38-115 Cu
F-201-303	50	10.5	38-115 Cu
F-201-303-1	70	12.8	38-142 Cu
F-201-304-1	95	14.0	38-165 Cu
F-201-305-1	120	16.0	38-165 Cu
F-201-306-1	150	18.0	38-183 Cu
F-201-307-1	185	21.8	SOLDER ONLY
F-201-326-1	240	24.2	SOLDER ONLY
F-3641	300	26.3	40-281 Cu
F-3641-1	240	24.2	40-281 Cu
F-3641-2	185	21.2	38-231 Cu

NB: CSA is indicative only. Use ID for thimble selection

Spare Parts

#	Part Number	Description
1A	F-4707A-374	300A 6600V Coupler Body c/w items 1A, 10, 11, 12, 13, 14, 15, 16, 17 & 18
1B	F-4707A-474	425A 6600V Coupler Body c/w items 1B, 10, 11, 12, 13, 14, 15, 16, 17 & 18
2	MO4700	Phase Pin Insulator
3	MO4701	Pilot Socket Insulator
4	See Table 2	Phase Thimble
5A	F-201-299	300A Phase Socket
5B	F-201-300-1	425A Phase Socket
6	AH009868	Screw 1/4" x 2 1/4" skt. head
7	F-3727	Pilot Thimble c/w screw AH009834 3/16" x 1 1/4" skt. head
8	F-3042-1	Pilot Socket
9	AH009834	Screw 3/16" x 1 1/4" skt. head
10	4708	Earth Connector
11	AI018993	O-ring ID 113.67 x sect. 6.99
12	4699	Retaining Plate
13	AH151037	Screw M6 x 12 csk. head
14	201-264-3	Earth Strap
15	AH113091	Screw M8 x 10 hex. head
16	AH151071	Spring Washer M8
17	AH009277	Washer 5/16"
18	AH113097	Screw M8 x 16 hex. head
19	CCAL35-6	Earth Lug
20	AH115112	Screw M6 x 16 skt. head
21	AH152001	Serrated Washer M6
22	AH009273	Washer 1/4"

CMI Head Office NSW | (02) 9807 6155 | 18-20 Railway Road, Meadowbank NSW 2114 | nswsales@cmielectrical.com.au

CMI QLD-Brisbane

(07) 3863 0749

485A Zillmere Road,

Zillmere QLD 4034

southqldsales@cmielectrical.com.au

CMI QLD - Rockhampton

(07) 4921 0978

Shop 3 at 76 Hollingsworth Street,

North Rockhampton Qld 4701

northqldsales@cmielectrical.com.au

CMI VIC

(03) 9532 1233

3 Dissik Street,

Cheltenham VIC 3192

vicsales@cmielectrical.com.au

CMI WA

(08) 9358 1788

36 Division Street,

Welshpool WA 6106

wasales@cmielectrical.com.au