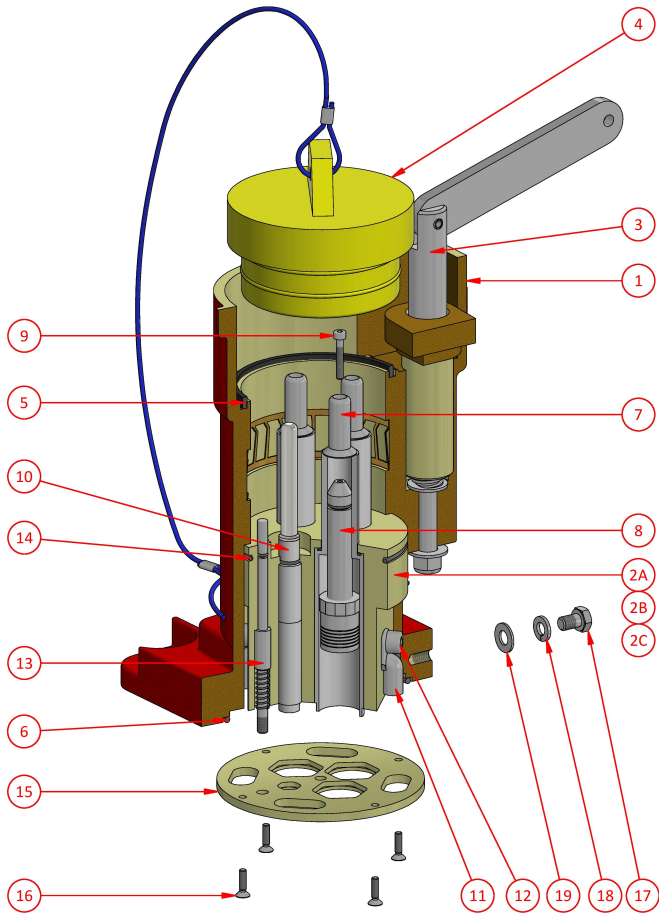


Receptacle  
AG334B

300 Amp Series  
3300V



Receptacle shown fitted with "Optional" Actuator

**Weight**  
**Dimensions**  
**Compliance**  
**Materials**  
**IP Rating**

19kg  
L 220mm W 220mm H 330mm  
Explosion protected to AS/NZS1299 & IEC60079 Series  
Manganese Bronze / Brass / PTFE  
IP66/68

Ordering Procedure

- 1  
2  
3

Select complete Receptacle from Table 1  
Select Phase Thimble from Table 2 (3 Required)  
Add Part No. from Table 1 & Options Table together to get Part No. required if an Actuator is needed

Table 1

3300V

Part Number	Description	Colour
AG334B	3300V Restrained Receptacle	Red

NB: Receptacle supplied with Pilot Thimble

Table 2

Phase Thimble - c/w screw AH151026 & O-ring AI019017

Part Number	CSA	ID mm	Utilux Die No.
F-4606-1	35	8.4	38-92 Cu
F-4606-2	50	9.5	38-104 Cu
F-4606-3	70	11.2	38-115 Cu
F-4606-4	95	13.4	38-142 Cu
F-4606-5	120	15.5	38-165 Cu
F-4606-6	150	16.3	38-183 Cu
F-4606-7	185	18.4	38-200 Cu
F-4606-8	185	21.0	Solder Only

NB: CSA is indicative only. Use ID for thimble selection

Options

Part Number	Description
A	Actuator

Example: AG334BA

Spare Parts

#	Part Number	Description
1	F-3343-334	3300V Receptacle Body c/w items 1, 3, 5, 6, 17, 18 & 19
2A	F-4602-1	Interior c/w O-ring, Earth Lugs, Retaining Plate & Screws
2B	F-4602-1A	Interior c/w O-ring, Actuator, Earth Lugs, Retaining Plate & Screws
2C	F-4602-1KIT(300-425A-4PIN)	Interior Service Kit c/w O-rings, Insulators, Pilot Pin Assy, Retaining Plate & Screws
3	3401B	Jacking Screw
4	F-311	Sealing Plug
5	4401-3	Seal
6	AI019010	O-ring ID 120.24 x sect. 3.53
7	4609	Phase Pin (Set of 3)
8	See Table 2	Phase Thimble
9	AH151026	Screw M4 x 25 skt. head
10	F-853-3	Pilot Pin & Thimble Assembly c/w Insulator & O-ring
11	AH017206	Earth Lug
12	AH151027	Screw M8 x 12 skt. head
13	F-4618	Actuator c/w O-ring AI019051 & Spring 4619
14	AI019048	O-ring ID 94.92 x sect. 2.62
15	4612	Interior Retaining Plate
16	AH151022	Screw M4 x 16 csk. head
17	AH113091	Screw M8 x 10 hex. head
18	AH009363	Spring Washer 5/16"
19	AH009277	Washer 5/16"

**CMI Head Office NSW** | (02) 9807 6155 | 18-20 Railway Road, Meadowbank NSW 2114 | nswsales@cmielectrical.com.au  
**CMI QLD-Brisbane**  
(07) 3863 0749  
485A Zillmere Road,  
Zillmere QLD 4034  
southqldsales@cmielectrical.com.au

**CMI QLD - Rockhampton**  
(07) 4921 0978  
Shop 3 at 76 Hollingsworth Street,  
North Rockhampton Qld 4701  
northqldsales@cmielectrical.com.au

**CMI VIC**  
(03) 9532 1233  
3 Dissik Street,  
Cheltenham VIC 3192  
vicsales@cmielectrical.com.au

**CMI WA**  
(08) 9358 1788  
36 Division Street,  
Welshpool WA 6106  
wasales@cmielectrical.com.au