

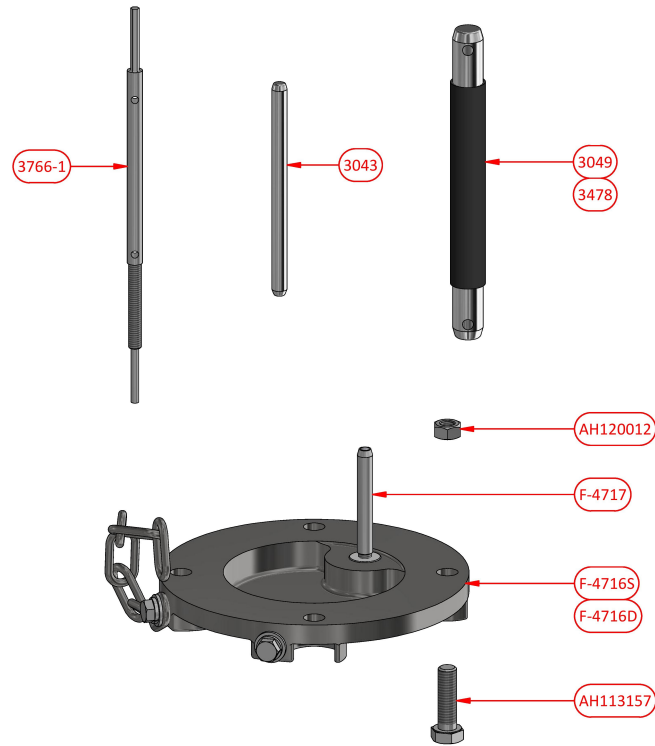


Ordering Procedure

- 1** Select complete Accessory from Table 1

Table 1

Part Number	Description
F-4716S	300/425A Blanking Cover
F-4716D	300/425A Blanking Cover with Pilot Diode
3049	300A Phase Connecting Pin
3478	425A Phase Connecting Pin
3043	300/425A Pilot Connecting Pin
F-4717	Pilot Diode Pin
3766-1	Socket Extraction Tool
AH113157	Screw M12 x 40 hex. head
AH120012	Nut M12



Compliance
Materials

Explosion protected to AS/NZS1300 & IEC60079 Series
Stainless Steel / Silver Plated Copper

CMi Head Office NSW | (02) 9807 6155 | 18-20 Railway Road, Meadowbank NSW 2114 | nswsales@cmielectrical.com.au
CMi QLD-Brisbane
(07) 3863 0749
485A Zillmere Road,
Zillmere QLD 4034
southqldsales@cmielectrical.com.au
CMi QLD - Rockhampton
(07) 4921 0978
Shop 3 at 76 Hollingsworth Street,
North Rockhampton Qld 4701
northqldsales@cmielectrical.com.au

CMi VIC
(03) 9532 1233
3 Dissik Street,
Cheltenham VIC 3192
vicsales@cmielectrical.com.au

CMi WA
(08) 9358 1788
36 Division Street,
Welshpool WA 6106
wasales@cmielectrical.com.au